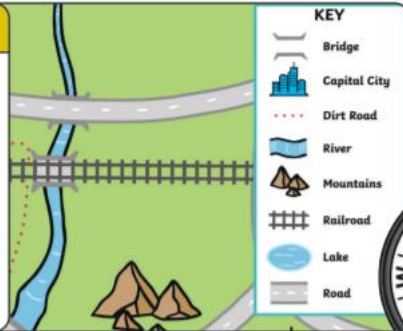


Y1 Autumn Term 1 2021- Back to school!

Maps

- A view from above a place
- Sometimes have a key with symbols
- Show the **distance** between places
- Sometimes have a compass
- Can use colour



Compass

A compass can be used to help you find your way. It shows four directions - north, east, south and west. It is useful to people who are, for example, navigating ships and aircraft, explorers, builders, etc.

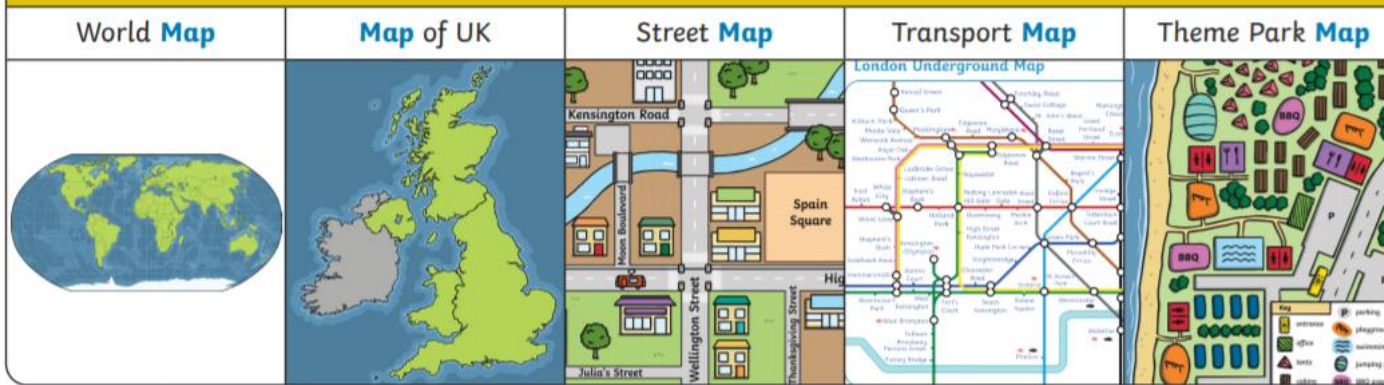


Symbols show what different things or places can be found in an area.

Key Vocabulary

local area	The area around where you live.
map	A drawing of an area shown from above.
address	The place where someone lives or a business is found.
observe	To watch/look at something carefully.
passport	A travel document needed to travel to other countries overseas.
distance	How far away something is.
aerial view (bird's eye view)	What somewhere would look like from above, looking down.
fieldwork	Working outside to collect information.
route	How you get to somewhere.

Types of Map



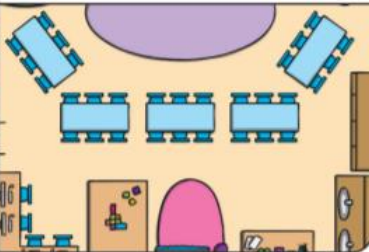
Aerial Photograph

A photograph taken from above looking down.



Aerial Plan

A drawing of what a place looks like from above.



Southbroom Infants School

The Green

Devizes

Wiltshire

SN10 5AA

My school address