

Science Focus	Plants	Foxes	Term 5
---------------	--------	-------	--------

Key Knowledge

A plant



A living thing that usually grows from the ground.

Garden Plant

A flower grown especially in a garden.
Some common garden plants to be able to recognise and name:
Rose
Daffodil
Sunflower
Tulip

Wild Plant

A wild plant will grow by itself. It does not need to be cared for.
Some common wild plants to be able to recognise and name:
Daisy
Dandelion
Buttercup

Deciduous Trees



Deciduous trees lose their leaves in the autumn every year. Their leaves are generally broad, flat and have veins running through them.

Evergreen Trees



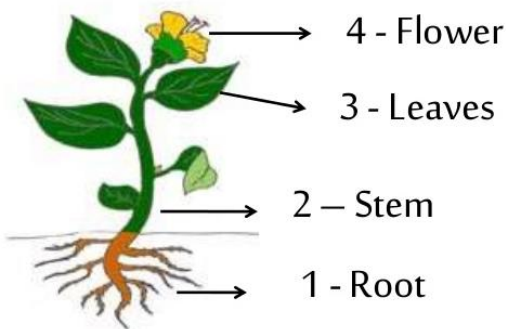
Evergreen trees have green leaves all year round. Their leaves are generally thick, waxy and narrow like needles.

Seed



The part of a flowering plant that can develop into a new plant.

Parts of a Plant



Vocabulary

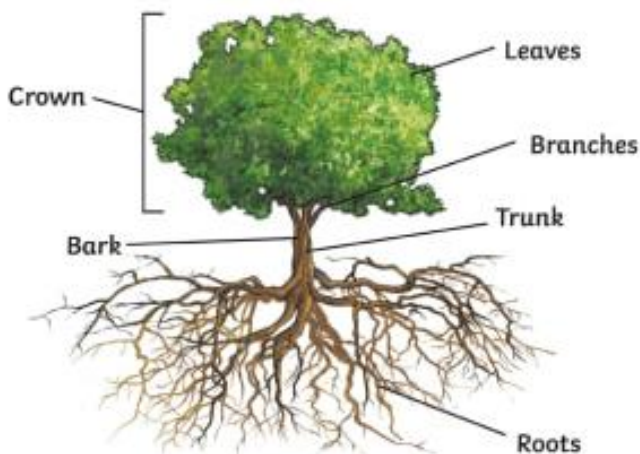
Root - The part of a plant that grows underground.

Flower - the part of a plant that is often brightly coloured and grows at the end of the stem.

Stem - the thin, upright part of a plant on which the flowers and leaves grow.

Leaf/leaves - the part of a tree or plant that are flat, thin and usually green.

Parts of a Tree



By the end of the unit the children will be able to:

- To identify and name a variety of common wild and garden plants, including deciduous and evergreen.
- To identify and describe the basic structure of a variety of common flowering plants, including trees.